

Zawias puszkowy kątowny 45° bez sprężyny

НАЛОЖЕНИЕ ФРОНТУ / FRONT OVERLAY / НАЛОЖЕНИЕ ФАСАДА



PARAMETRY / CHARACTERISTICS / ХАРАКТЕРИСТИКИ



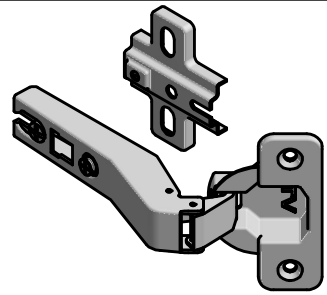
OPCJE ZESTAWU / SET OPTIONS / КОМПЛЕКТАЦИЯ



ПАКОВАНИЕ / PACKING / УПАКОВКА



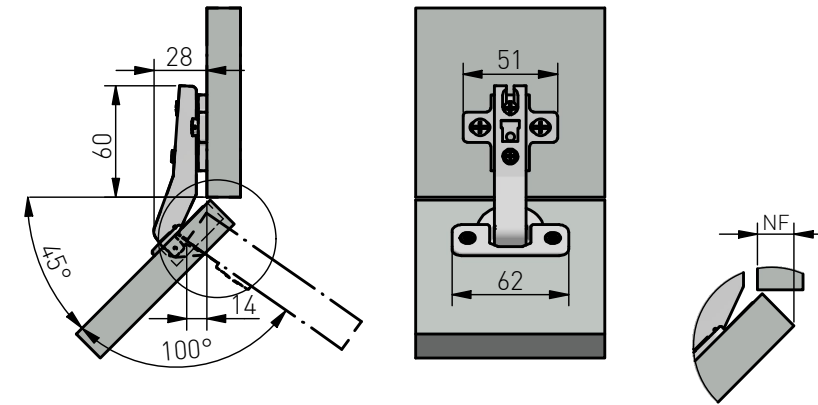
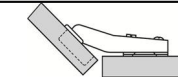
Informacje handlowe



Opcja	Prowadnik	Numer katalogowy	
Z Euro	H2	ZP-COCAKT45H2-ZE	x 2

Planowanie

Zawias kątowny 45°

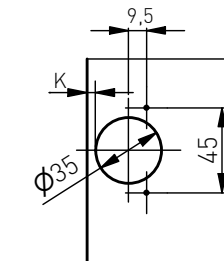
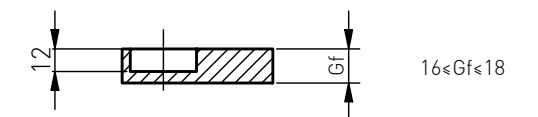
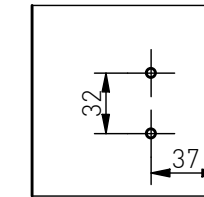
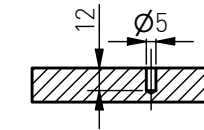


Montaż

Montaż prowadnika w korpusie

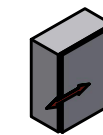
Montaż puszki we froncie

Montaż na wkręty EURO

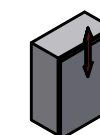


kątowny 45°					
Odległość puszki od krawędzi K					
Natożenie frontu = NF					
	13	14	15	16	17
H=2			3	4	5

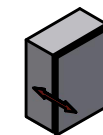
Regulacja



±2mm



±2mm



±2mm